





Vasche
Bathtub

Sense Dual

Sense Dual

Vasca rettangolare / *Rectangular bathtub*

cm 190x140 capacità / *capacity 430 lt*

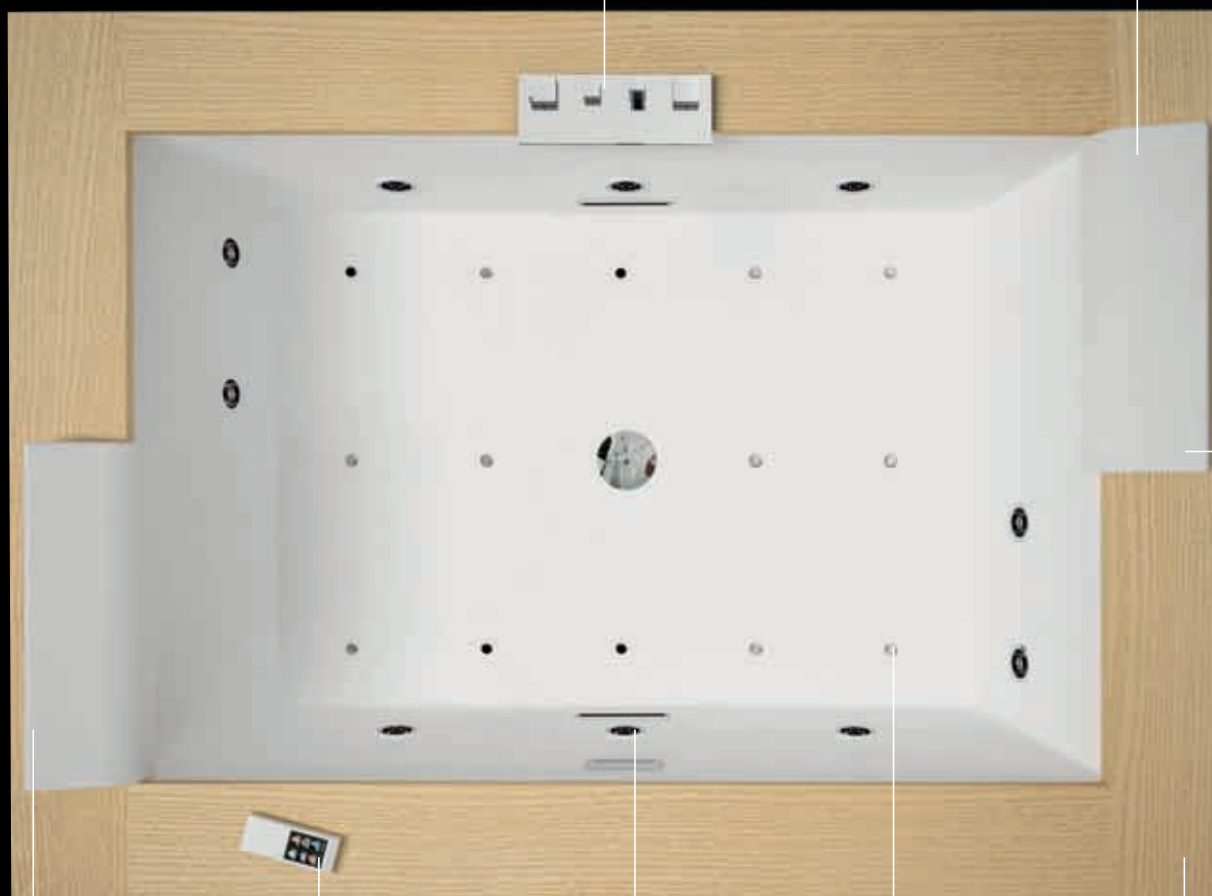
FINITURE DISPONIBILI / *FEATURES*



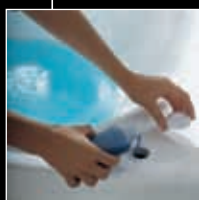
Rubinetteria a bordo vasca con cascata d'acqua
Bath mounted mixer



4 Altoparlanti waterproof
4 Waterproof loudspeakers



2 Poggiatesta bianchi in vera pelle.
2 white head rest in true skin.



Disinfezione
Disinfectant system



Telecomando
Touch screen
Touch screen remote control



Whirlpool 10 jets con
bocchette in ottone cromato
Whirlpool 10 jets in chromed brass



Airpool 14 jets con
bocchette in ottone cromato
Airpool 14 jets in chromed brass



Connessione MP3
MP3 Connection

SEN719014T7-A0A

= **SEN719014T7**

+ **-A0**

+ **-U0**

+ **A**

Esempio compilazione codice:

How to choose your product using the codes:

-A0 -U0

A

U

P

Q

T

Vasca Bathtub	Misure Measurements (cm)	Codice Code	Scelta finitura vasca Chosen finish bath		Scelta Finiture Bordovasca Chosen Bath board					Prezzo Price
			lucido glossy	morbido soft	bianco lucido white shiny	bianco morbido white soft	frassino ash	rovere sbiancato white oak	teak	

VERSIONE DA INCASSO / BUILT-IN VERSION

	193 x 140 x 64 H	SEN719014T7	-A0	-U0	A	U	P	Q	T	
					bianco lucido white shiny	bianco morbido white soft	frassino ash	rovere sbiancato white oak	teak	

FINITURE: 14 Airpool, 10 Whirlpool, 2 Poggiatesta bianchi in vera pelle, Disinfezione, Rubinetteria a bordo vasca con cascata d'acqua, Cromolight, Telecomando Touch Screen, Radio RDS Stereo con 4 diffusori, Presa AUX per MP3. Funzioni Whirlpool: regolazione intensità elettronica, effetto modulante e riscaldatore acqua. Funzioni Airpool: air continuo oppure intermittente.

FEATURES: 14 Airpool nozzles, 10 Whirlpool nozzles, 2 white head rest in true skin, head rest, Disinfectant system, Bat mounted mixer, Chromotherapy lights, Touch screen remote control, Radio RDS Stereo with 4 loudspeakers, MP3 AUX plug. Whirlpool functions: electronic intensity control, modulation effect and water's heater. Airpool functions: Airpool non-stop or intermittent.

PANNELLI OPTIONAL / OPTIONAL PANELS

1 PANNELLO FRONTALE 193 cm

1 FRONT PANEL 193 cm

	193 x 140 x 64 H	PANVFSE194-	A	U	P	Q	T	
			bianco lucido white shiny	bianco morbido white soft	frassino ash	rovere sbiancato white oak	teak	

1 PANNELLO FRONTALE 193 cm + 1 PANNELLO LATERALE 140 cm

1 FRONT PANEL 193 cm + 1 SIDE PANEL 140 cm

	193 x 140 x 64 H	PANVFLSE194-	A	U	P	Q	T	
			bianco lucido white shiny	bianco morbido white soft	frassino ash	rovere sbiancato white oak	teak	

1 PANNELLO FRONTALE 193 cm + 2 PANNELLI LATERALI 140 cm

1 FRONT PANEL 193 cm + 2 SIDE PANELS 140 cm

	193 x 140 x 64 H	PANVF2LSE194-	A	U	P	Q	T	
			bianco lucido white shiny	bianco morbido white soft	frassino ash	rovere sbiancato white oak	teak	

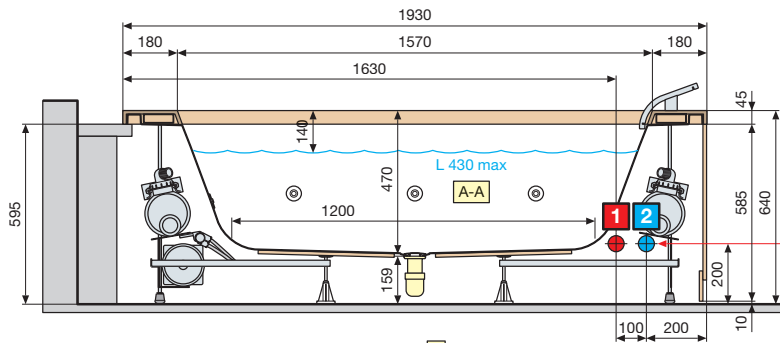
2 PANNELLI FRONTALI 193 cm + 2 PANNELLI LATERALI 140 cm

2 FRONT PANELS 193 cm + 2 SIDE PANELS 140 cm

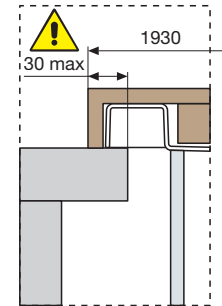
	193 x 140 x 64 H	PANVFLSE194C-	A	U	P	Q	T	
			bianco lucido white shiny	bianco morbido white soft	frassino ash	rovere sbiancato white oak	teak	

Dati tecnici vedi pag. 283. / For technical diagrams see page 283.

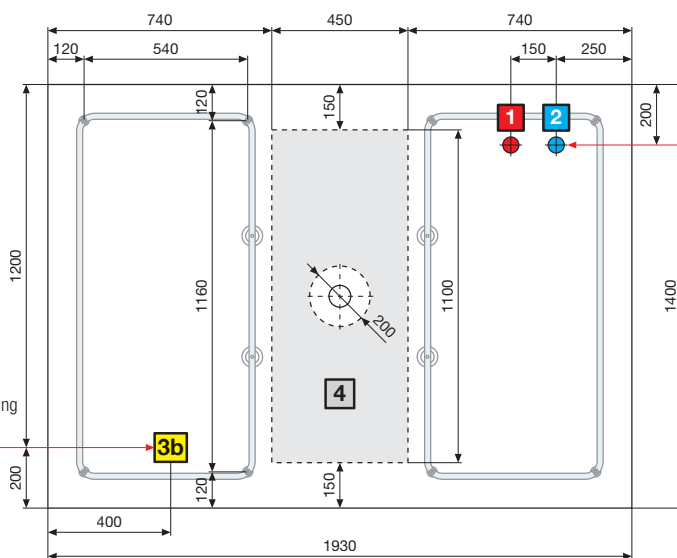
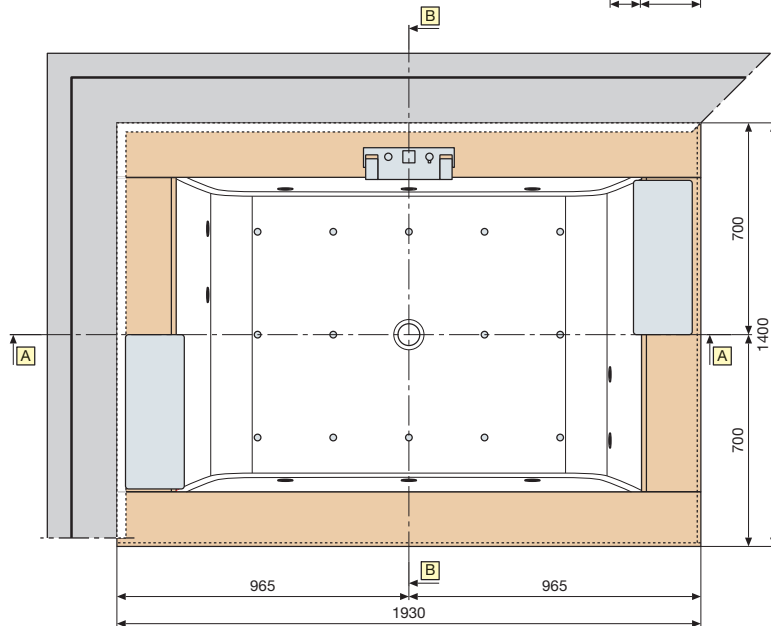
SENSE DUAL



in caso di allacci idraulici a muro
in case of water connection to wall

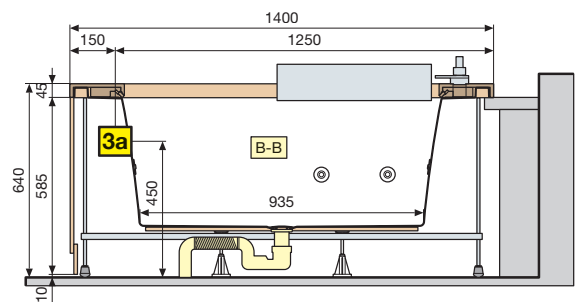


Particolare vasca ad incasso
Particular of shell for built-in installation



in caso di allacci idraulici a muro
in case of water connection to wall

se vasca installata Freestanding
if the bath is Freestanding



- 1** 1/2"
- 2** 1/2"
- 3a**
- 3b**
- 4** Area consigliata per lo scarico a pavimento / Recommended position for floor discharge.

Installare a monte dell'apparecchio un interruttore differenziale da 30mA provvisto di interruttore onnipolare con apertura minima dei contatti ≥ 3 mm.
The whirlpool bath system must be fitted upstream with a 30 mA circuit breaker with a minimum contact of 3mm.

Disegni tecnici rubinetteria a pavimento pag. 102 / Free standing mixer technical drawings pag. 102

CARATTERISTICHE IDRAULICHE

- 10 bocchette whirlpool
- 14 bocchette airpool
- Allaccio sifone con raccordo 1 1/2"

CARATTERISTICHE ELETTRICHE

- Tensione 230 V
- Frequenza 50 Hz
- Potenza massima assorbita: whirlpool + airpool: 3600 W

HYDRAULIC CHARACTERISTICS

- 10 whirlpool nozzles
- 14 airpool nozzles
- Siphon connection with 1 1/2" coupling

ELECTRICAL CHARACTERISTICS

- Supply voltage 230 V
- Frequency 50 Hz
- Maximum absorbed power: whirlpool + airpool: 3600 W