



**NEXIS DUAL** Cabina multifunzione con sauna di vapore / Multifunction complete cubicle with steam



Nexis



Tettuccio in HPL finitura legno  
*Dome in leafy HPL with finish wood*

Presca AUX per MP3  
*MP3, AUX plug*

2 Soffioni doccia  
*2 shower heads*

2 faretti Cromolight  
*2 Cromolight lamp*

Doccia a mano in  
ottone cromato  
*Shower hand in  
chromed brass*

2 Portaoggetti in HPL  
finitura legno  
*2 soap holders in leafy HPL  
with finish wood*

Idromassaggio  
vert. orientabile  
*Adjustable vertical  
hydromassage*

Telecomando  
touch screen  
*Touch screen  
remote control*

Schienale in HPL finitura legno  
*Back in leafy HPL with finish  
wood*

Sedile in HPL finitura legno  
reclinabile  
*Folding seat in leafy HPL  
with finish wood*

Dispenser di aromi  
*Aroma dispenser*

Pedana in HPL finitura legno  
*Shower tray base in leafy HPL  
with finish wood*

# Nexis Dual

Vetro 8 mm temperato certificato  
Safety glass 8 mm complying with  
European Standards UNI EN 14428

Altezza cabina / Complete cubicle height  
235 cm con piatto / with shower tray h 8  
243 cm con piatto / with shower tray h 16

Codice/Code: **NEX2A170T5-1KA** = **NEX2A170T5-1K** + **A**

Esempio compilazione codice:  
How to choose your product using the codes:

**NEX2A170T5-1K**

**A**

**P**

**Q**

**T**

Miscelatore  
Mixer

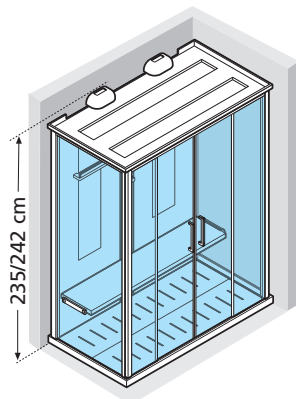
Misure  
Measurements  
(cm)

Codice  
Code

Scelta finitura colore  
Chosen HPL finishing

Prezzo  
Price

**Nexis Dual** - Cabina multifunzione con sauna di vapore / Multifunction complete cubicle with steam



			A	P	Q	T
TERMOSTATICO THERMOSTATIC	170 x 90 x 235 H	<b>h 8</b>	bianco white	frassino ash	rovere sbianc. white oak	teak
	170 x 90 x 243 H	<b>h 16</b>				

FINITURE: Tettuccio in HPL finitura legno, Idromassaggio vert. orientabile, 2 Soffioni doccia, Doccia a mano in ottone cromato, Sedile in HPL finitura legno reclinabile, Schienale in HPL finitura legno, 2 Ripiani portaoggetti in HPL finitura legno, Pedana in HPL finitura legno, Sauna plus (2 erogatori di vapore e dispenser di aromi, Radio FM RDS Stereo, Presa AUX per MP3, 2 faretto Cromolight), Telecomando Touch Screen

FEATURES: Dome in leafy HPL with finish wood, Adjustable vertical hydromassage, 2 shower heads, Shower hand in chromed brass, Folding seat in leafy HPL with finish wood, Back in leafy HPL with finish wood, 2 soap holders in leafy HPL with finish wood, Shower tray base in leafy HPL with finish wood, Sauna plus (2 steam and aroma dispenser, Radio FM RDS Stereo, MP3, AUX plug, 2 Cromolight lamp), Touch screen remote control



versione bianco  
white version



versione frassino  
ash version



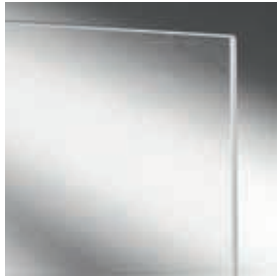
versione teak  
teak version

\* altezza piatto / shower tray height.

Finiture pag. 18, dati tecnici pag. 19. / Features page 18, technical diagrams page 19.

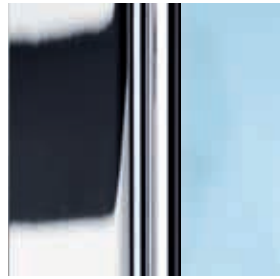
## Dati tecnici / *Technical data*

### Vetri *Glass types*



Trasparente  
*Clear*

### Finitura Profili *Profile colours*



Cromo  
*Chrome*

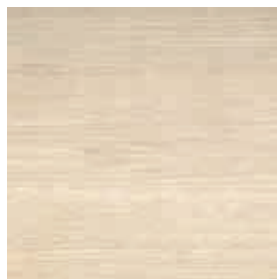
### Laminato HPL finitura legno *Leafy HPL with finish wood*



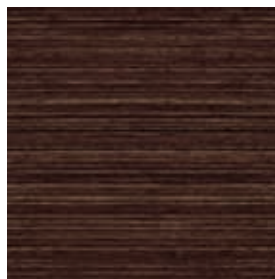
bianco  
*white*



frassino  
*ash*



rovere sbiancato  
*white oak*



teak

Il laminato HPL è un materiale con una superficie molto resistente ai graffi, all'abrasione, all'acqua e al calore. Facile da pulire e quindi ideale per applicazioni dove l'igiene è essenziale, come nei bagni.

*The leafy HPL is a material with a very resistant surface to the scratches, to the abrasion, to the water and the heat.*

*The leafy HPL is easy to be cleaned and therefore ideal for applications where the hygiene is essential, as in the baths.*

### Finiture *Features*



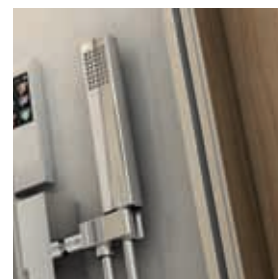
Tettuccio in HPL finitura legno,  
Soffione doccia  
*Dome in leafy HPL with finish wood*



Idromassaggio vert. orientabile  
*Adjustable vertical hydromassage*



Sedile in HPL finitura legno  
reclinabile, Schienale in HPL  
finitura legno fissaggio magnetico  
*Folding seat in leafy HPL with  
finish wood, Back in leafy HPL with  
finish wood with magnetic fixing*



Doccia a mano in ottone cromato  
*Hand shower in chromed brass*



Telecomando Touch screen  
*Touch screen Remote Control*



Pedana in HPL finitura legno  
*Shower tray base in leafy HPL with  
finish wood*



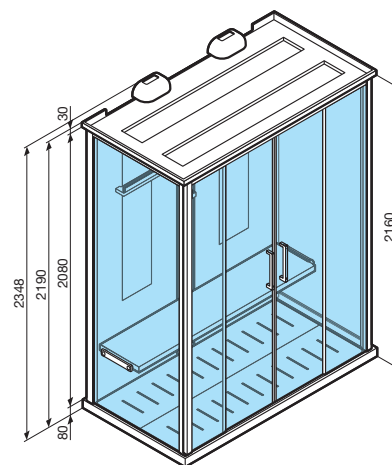
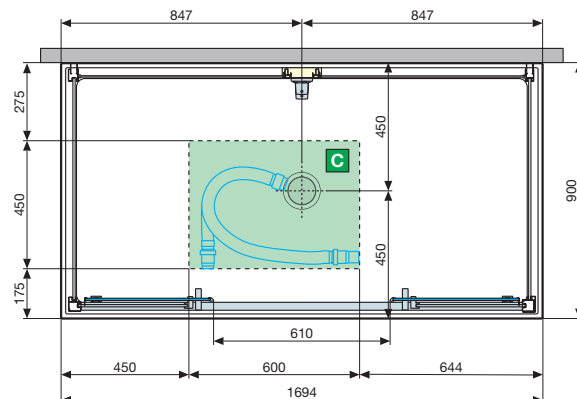
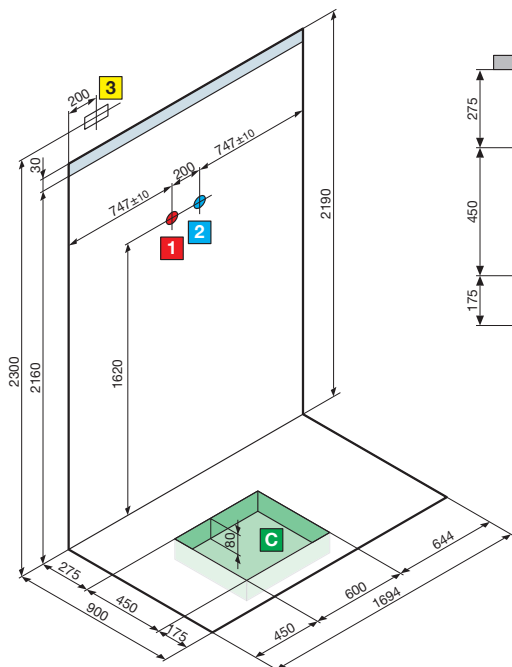
Erogatore di vapore  
*Aroma dispenser*



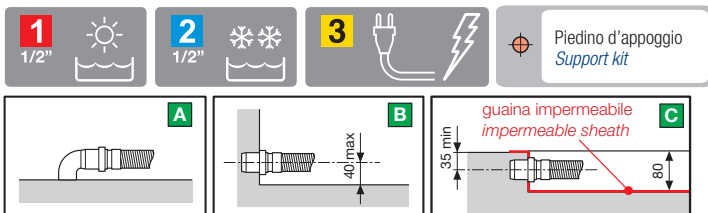
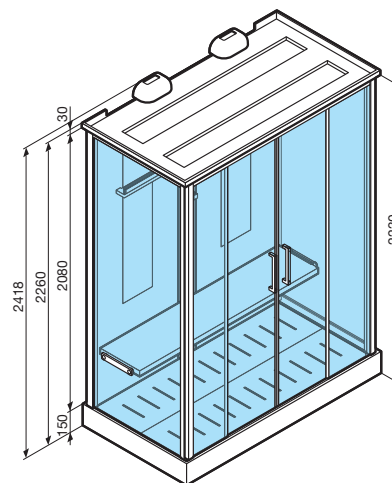
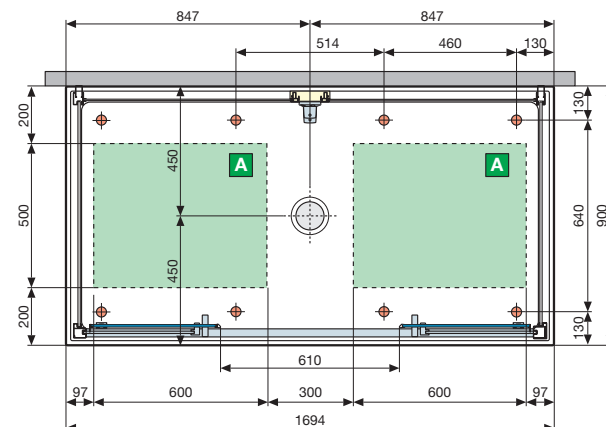
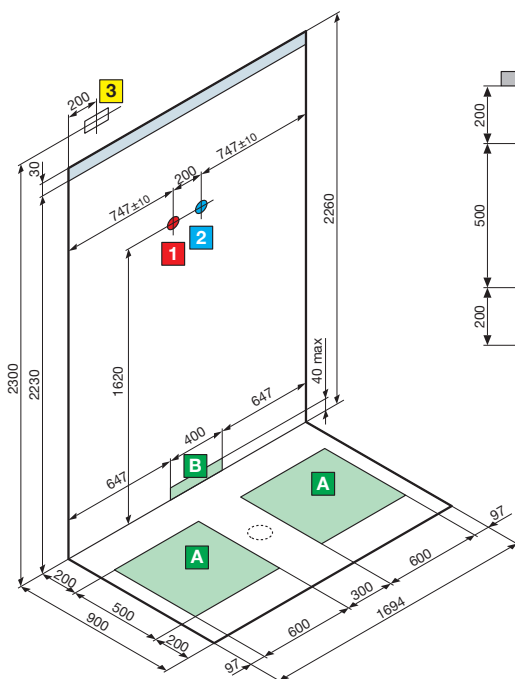
Connessione MP3  
*MP3 Connection*

# NEXIS DUAL

## PIATTO BASSO / LOW TRAY



## PIATTO ALTO / HIGH TRAY



### CARATTERISTICHE IDRAULICHE

- Pressione dinamica ottimale 2÷5 bar
- Acqua calda 1/2"
- Acqua fredda 1/2"
- Allaccio sifone con raccordo Ø 40 mm

### CARATTERISTICHE ELETTRICHE

- Tensione 220-230 V
- Frequenza 50/60 Hz
- Potenza massima assorbita: 6600 W
- Potenza nominale: 5200 W

### HYDRAULIC CHARACTERISTIC

- Optimum dynamic pressure 2-5 bar
- 1/2" hot water connection
- Cold water connection 1/2"
- Siphon connection with 40 mm diameter coupling

### ELECTRICAL CHARACTERISTIC

- Supply voltage 220-230 V
- Frequency 50/60 Hz
- Maximum absorbed power: 6600 W
- Nominal power 5200 W